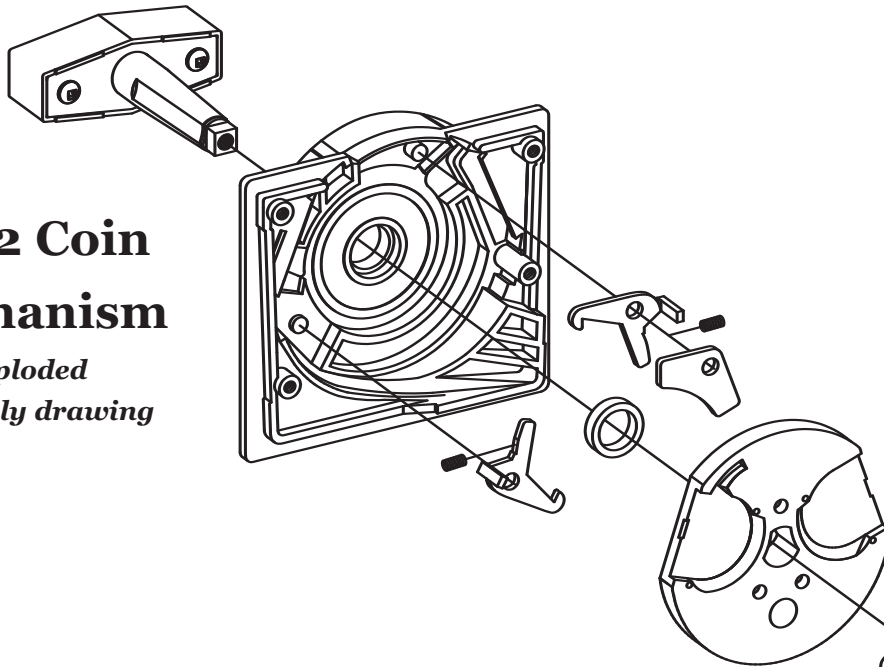




COIN MECHANISMS

NG 2 Coin Mechanism

exploded assembly drawing



Standard Coin Mechanism

with RB Option #2

Standard Coin Mechanism

Beaver Machine Corporation's Standard Coin Mechanism is the "Classic" coin mechanism that set the industry standard many years ago. Its all metal die cast construction and triple chrome plated finish generate a level of quality only found in Beaver products. The Standard coin mechanisms are only suitable for Canada and United States currency and are designed for single coin vending to fit the Round Beaver, Southern Beaver and Ball Globe Beaver series machines, implicitly.

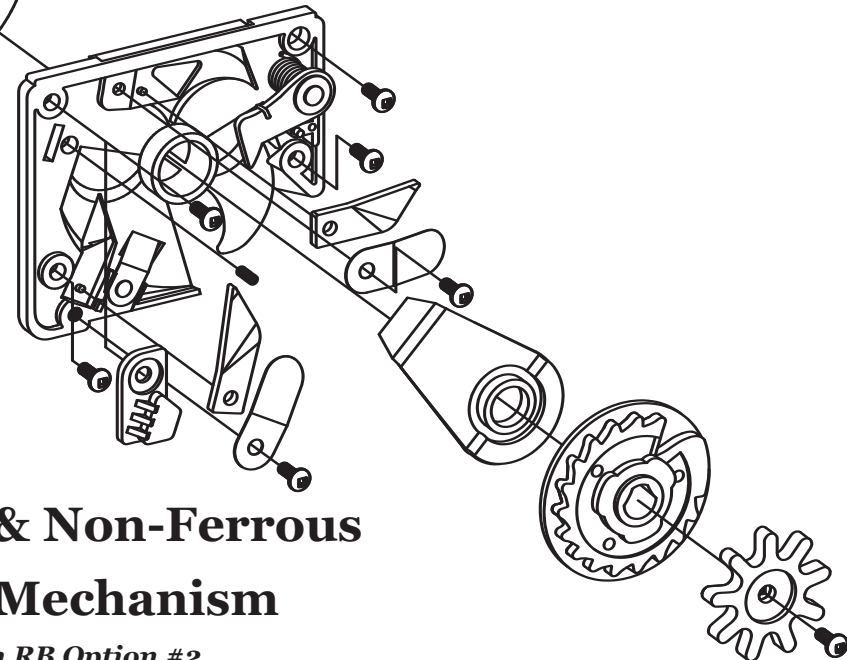
The Ferrous & Non-Ferrous Coin Mechanism

These mechanisms are designed to reduce the acceptance of plastic, cardboard, and metal slugs by detecting the magnetic principles of the item inserted into the coin carrier. The Ferrous coin mechanism detects plastic and cardboard slugs and the Non-Ferrous coin mechanism detects metal slugs. This technology prevents the coin mechanism from turning if a specific type slug is inserted.



Ferrous & Non-Ferrous Coin Mechanism

with RB Option #2



COIN MECHANISMS

New Generation Coin Mechanism

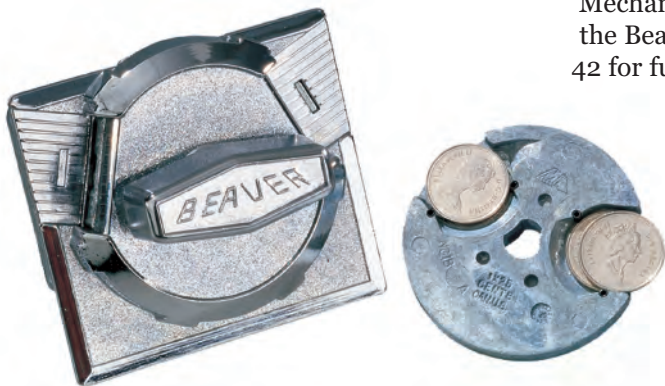
Beaver Machine Corporation maintains an industry leading reputation for developing, producing, and advancing the most accurate, mechanical rotary coin acceptor in the world. The Beaver New Generation Coin Mechanism accepts tokens and currency in over 100 countries and is able to measure the coins for diameter and thickness more accurately than any other rotary coin mechanism in the market. It has the option of accepting multiple coins and is offered as a single coin, two-coin, three-coin, or four-coin back-to-back option. Without jamming, the coin mechanism has the ability to divert slugs and filter through most currency that is not meant to be accepted, allowing for a continuous vending cycle and maximized revenues. The New Generation Coin Mechanism also includes our revolutionary clutch handle that prevents vandals from breaking the handle, or any internal components of the coin mechanism, when the wrong currency or slugs are inserted or when forced with a wrench. Its triple chrome plated, all metal construction, instills a high level of quality and durability. A striking appeal that O.E.M.'s (Other Equipment Manufacturers) around the world entrust within their own machines. The New Generation Coin Mechanism has few servicing requirements and is backed by the Beaver services/warranty/Lifetime Guarantee. (See page 42 for further details on beaver's Limited Lifetime Warranty).



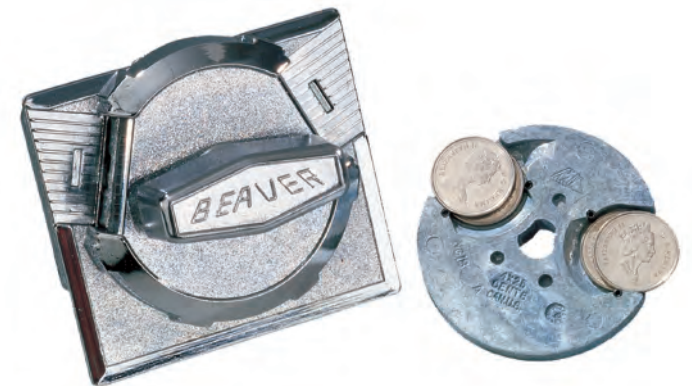
NG 1 Coin Mechanism



NG 2 Coin Mechanism



NG 3 Coin Mechanism



NG 4 Coin Mechanism



BEAVER MACHINE CORPORATION

1341 Kerrisdale Blvd.
Newmarket, Ontario
Canada L3Y 8Z8

e-mail: sales@beavervending.com

web: www.beavervending.com

U.S.A.: 1.800.265.6772

Int'l.: 1.905.836.4700

Fax: 1.905.836.4737



"Beaver sales
representatives are eager
to speak with you"